

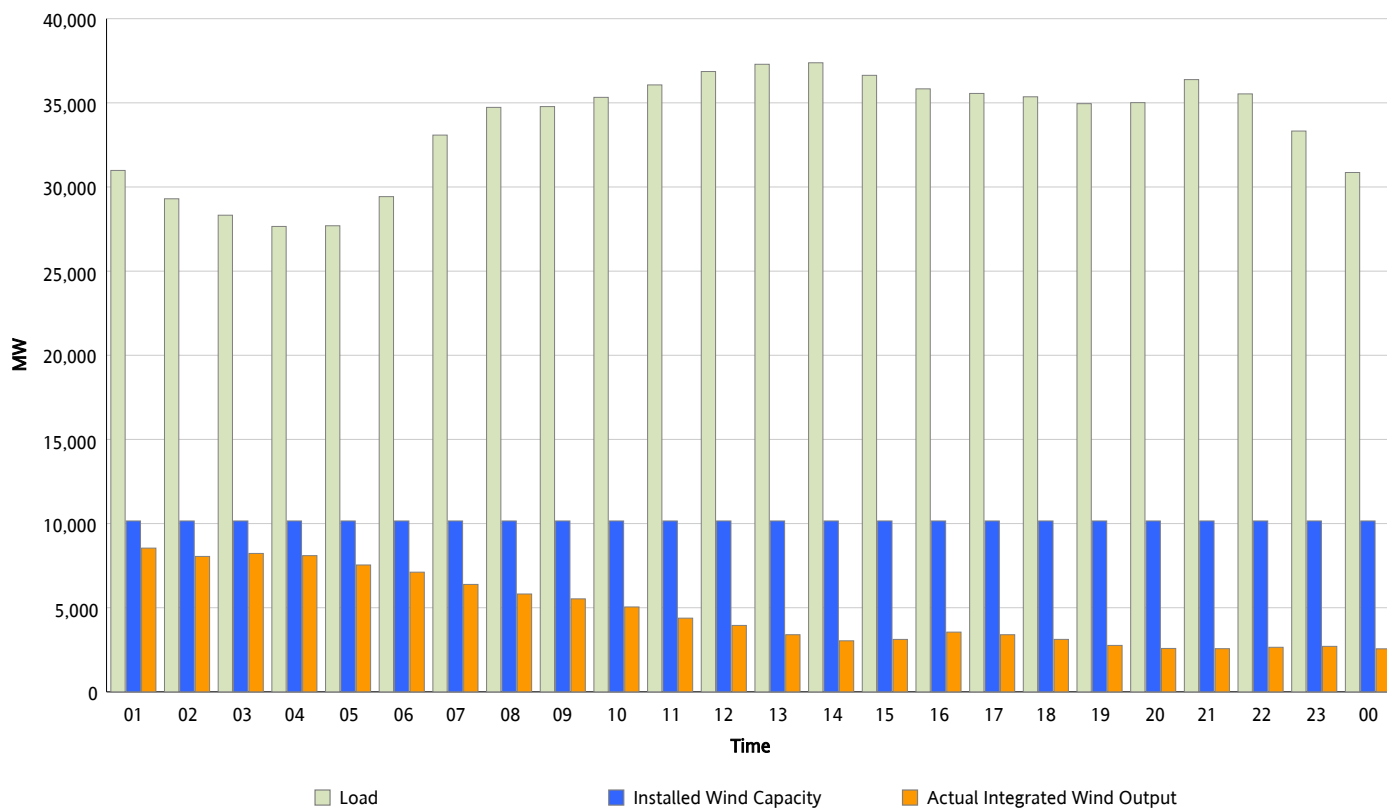


## ERCOT Grid Operations

### Wind Integration Report : 04/10/2013

Peak Load	37,380 MW
Load Peak Hour (HE)	14
Wind Over Peak	3,034 MW
Wind Record 02/09/13	9,481 MW
Max Wind Value*	8,926 MW
Wind Peak Time	00:14
Wind Integration %	28.24 %

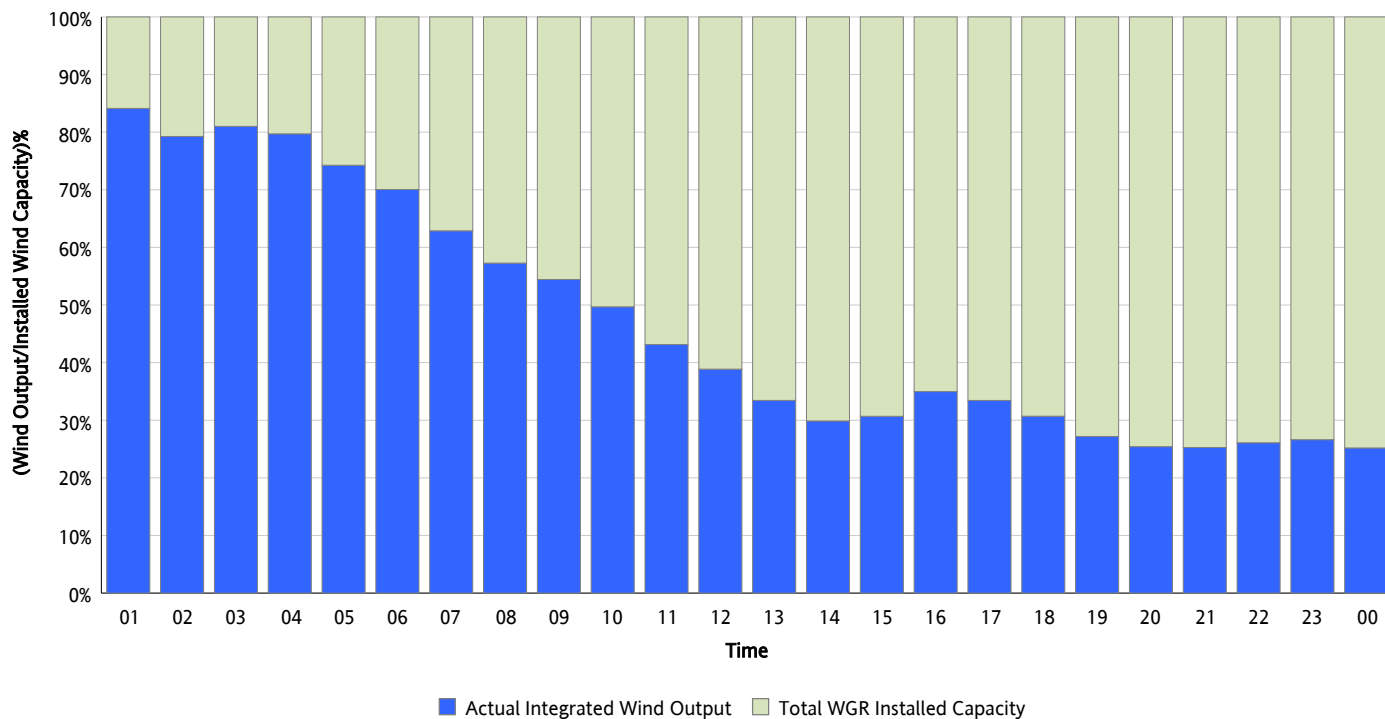
**Hourly Average Actual Load vs. Actual Wind Output**  
**04/10/2013**



\* Wind Record and Wind Max represent instantaneous values and the rest of the values are integrated over the hour

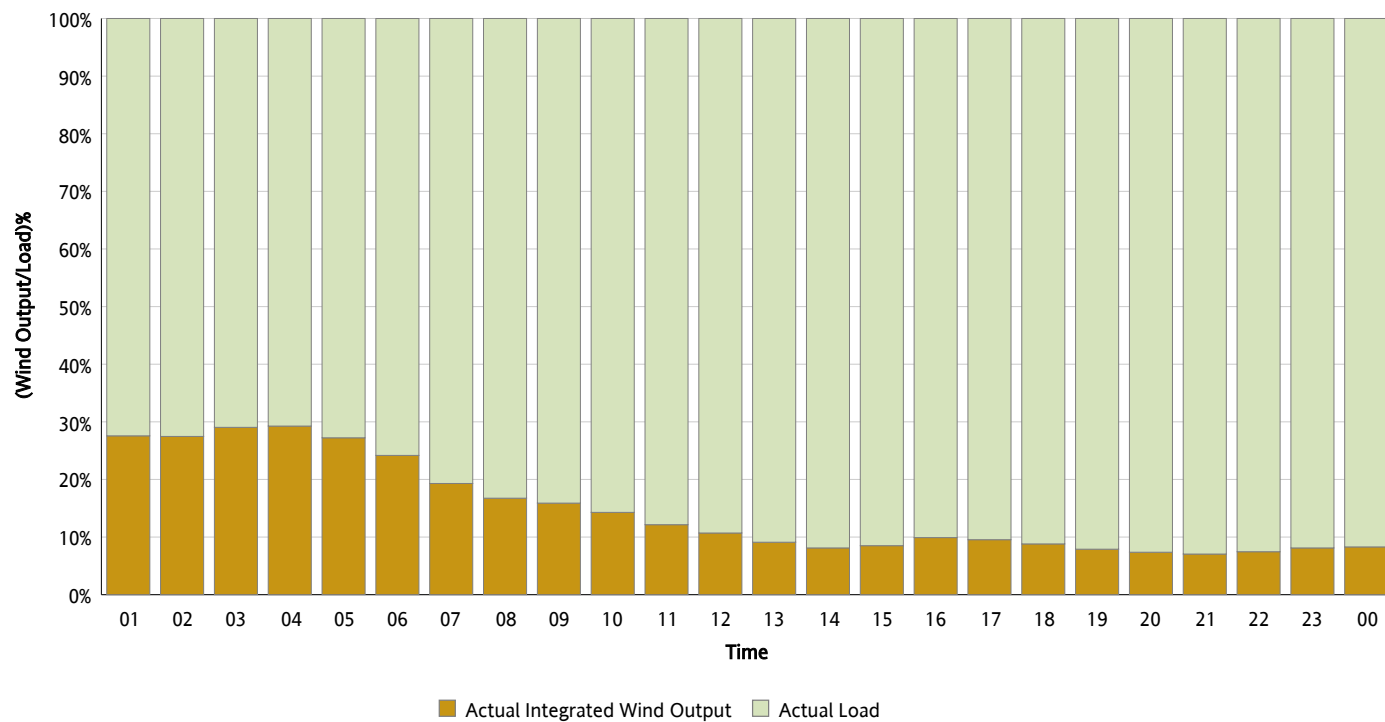
## Actual Wind Output as a Percentage of the Total Installed Wind Capacity

04/10/2013



## Actual Wind Output as a Percentage of the ERCOT Load

04/10/2013



## ERCOT Load vs. Actual Wind Output

04/03/2013 - 04/10/2013

